

LED Indoor Rental Display

TW31-IR Series

INTRODUCTION

Our LED Rental displays are designed for flexibility and ease of use, featuring lightweight, modular panels for quick assembly and disassembly. Ideal for events and exhibitions, they deliver stunning visual clarity and vibrant colors, enhancing audience engagement and providing a memorable viewing experience in any temporary setup.



FEATURES

- High contrast corrugated light
- Absorption mask achieves high contrast
- The cabinet design is simple and there are no cable connections between the cabinets.
- Cabinet weight: 2.9kg/4.5kg/5.8kg
- The Cabinet is lighter and thinner, reducing transportation costs and installation labor costs.
- full frontal access Maintenance is easier
- Hot-swappable and wireless connection
- Modules and cabinet are adsorbed by multiple magnetic columns, which is firm
- TW31-IR Only 25mm thick. The conventional cabinet is 50-60mm thick.
- Saw tooth heat sink design doubles the heat dissipation area



TW31-IR Series



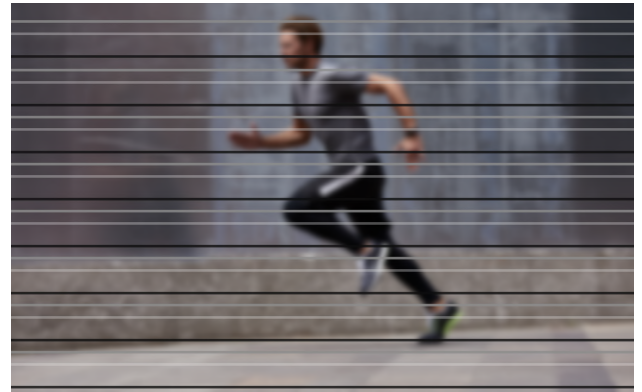
Cabinet Weight

Cabinet weight :2.9kg/4.5kg/5.8kg
Cabinet is lighter and slimmer,
it reduces the transportation cost and
installation labor cost

Refresh Rate



High Refresh Rate



Low Refresh Rate

Gray Scale



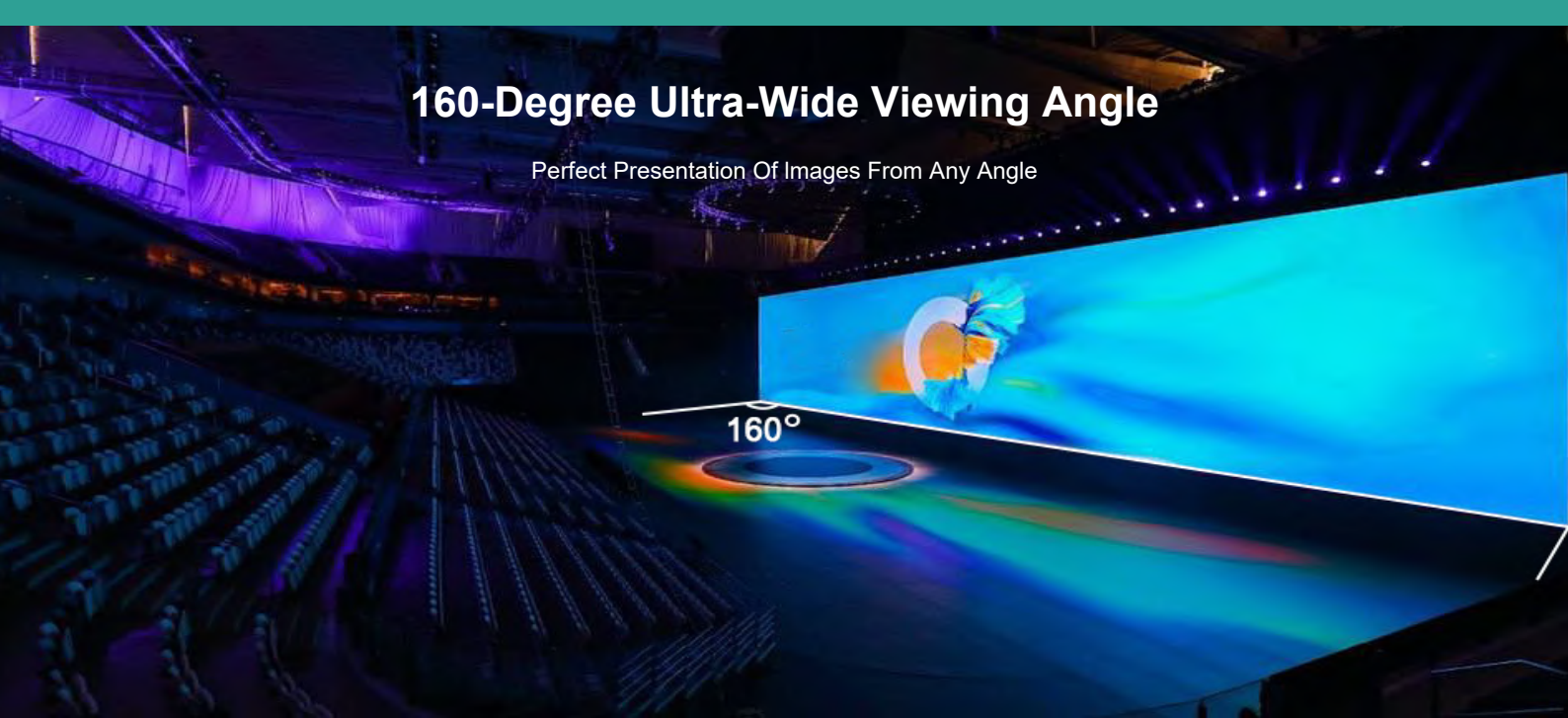
High Grey Scale



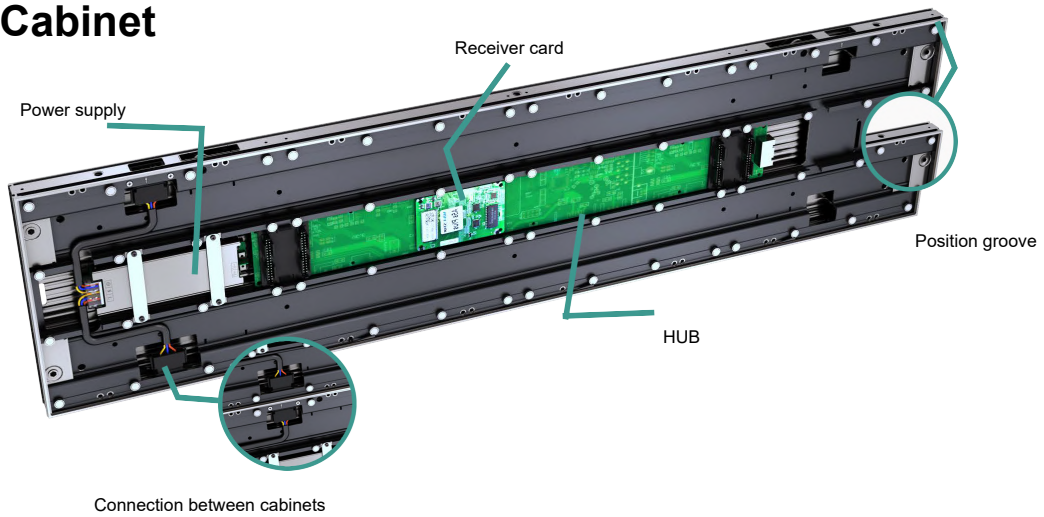
Low Grey Scale

160-Degree Ultra-Wide Viewing Angle

Perfect Presentation Of Images From Any Angle

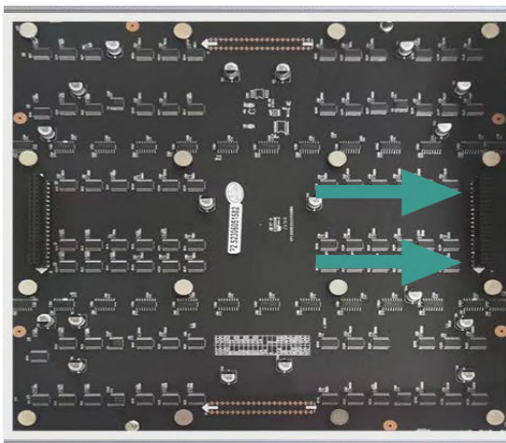


Details Of Cabinet

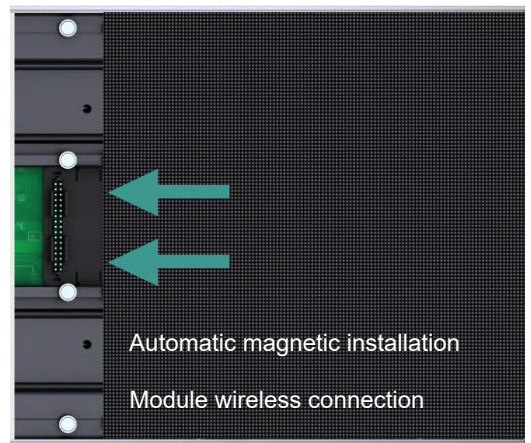


Hot Swapping · Cableless Connection

Hardware connection between modules and cabinet is more stable Aluminum cabinet has better heat dissipation performance.



Module



Cabinet

SPECIFICATIONS

Item Number	TW31-IR-P1.9H	TW31-IR-P2.6H	TW31-IR-P3.9H
Pixel Pitch	1.953mm	2.604mm	3.91mm
Pixel Density	262144pixels/sqm	147,456pixels/sqm	65,536pixels/sqm
LED Arrangement	SMD1515	SMD1921/2121/1515	SMD1921/2121
Module Resolution	128x128pixels	96x96pixels	64x64pixels
Panel Resolution	512x128pixels	384x96pixels	256x64pixels
Module Dimension	250x250mm		
Panel Dimension	1250/1000/750x250mm		
Panel Weight	20kg		
Brightness Level	800-1,000nits(SMD2121/1515) - 3000-4500nits(SMD1921)		
Max Power Consumption	480W/m ²		
Ave Power Consumption	150W/m ²		
Visual View Angle	160°/160°		
Operating Power Source	90-264V/ AC 50-60Hz		
Operating Temperature	- 20~ +70		
Refresh Rate	≤3840Hz(Configurable)		
Protecting Rating	IP20		
Signal Input Source	S-video,VGA,DVI,HDMI,SDI		