

LED Control System

MRC16 Receiving Card

INTRODUCTION

MRC-16 receiving card is a specially introduced high cost-effect product of color light which is delightedness for customers to save cost, reduce points of fault and failure rate. MRC-16 single card can load up to 256x1024 pixels, support up to 32 groups of parallel data or 32 groups of serial data. Based on the technical advantages of conventional receiving cards, MRC-16 can be integrate into the HUB75 interfaces, which is more reliable and more economical on the premise of ensuring high-quality display.



FEATURES

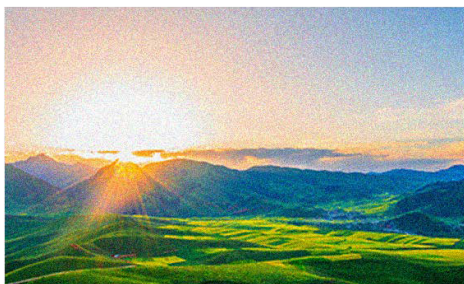
- 8bit video source input.
- Color temperature adjustment
- 240Hz frame rate.
- Grayscale is better at low brightness.
- Pixel-to-pixel calibration of luminance and chrominance.
- Highlights and OSD.
- The screen rotates.
- Data group offset.
- Any pump row and any pump column and any pump point.
- Fast firmware upgrade and quick release of correction coefficients.
- Loop redundancy.
- Ethernet cable status monitoring.
- Firmware program redundancy and readback.
- Work 24/7.

MRC16 Series

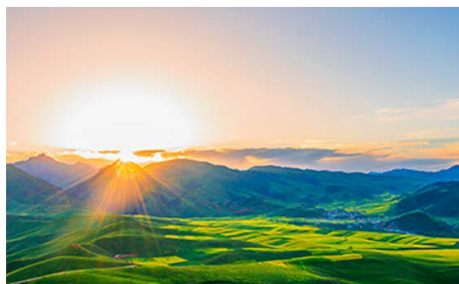
RELEVANT FUNCTION INDICATION

Brightness and chroma calibration

Effectively eliminating the color difference between pixels, achieve whole screen color and brightness uniformity and consistency. Improve overall display quality.



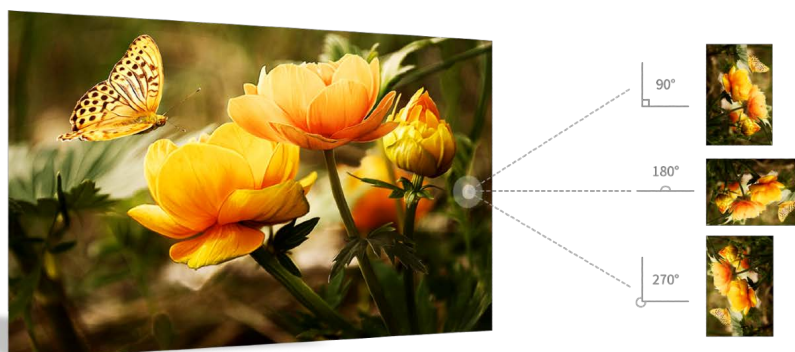
Before



After

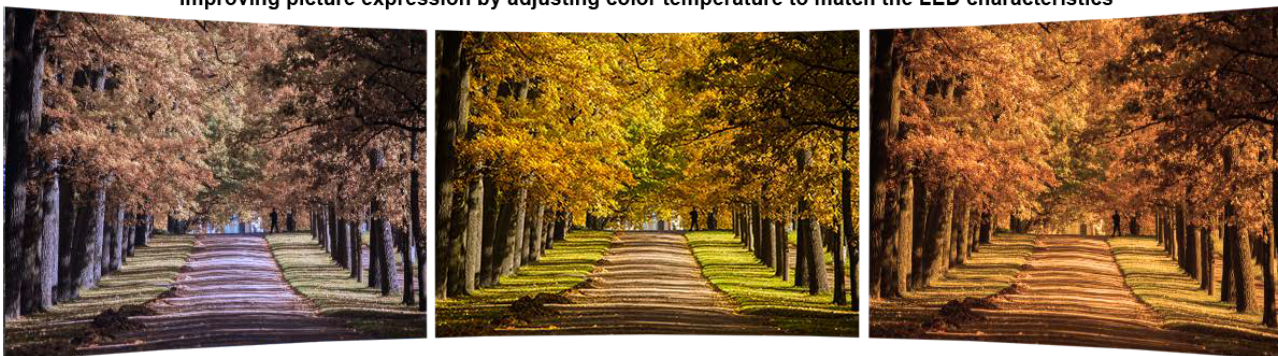
Cabinet image rotation

Cabinet image rotates at 90°/180°/270°

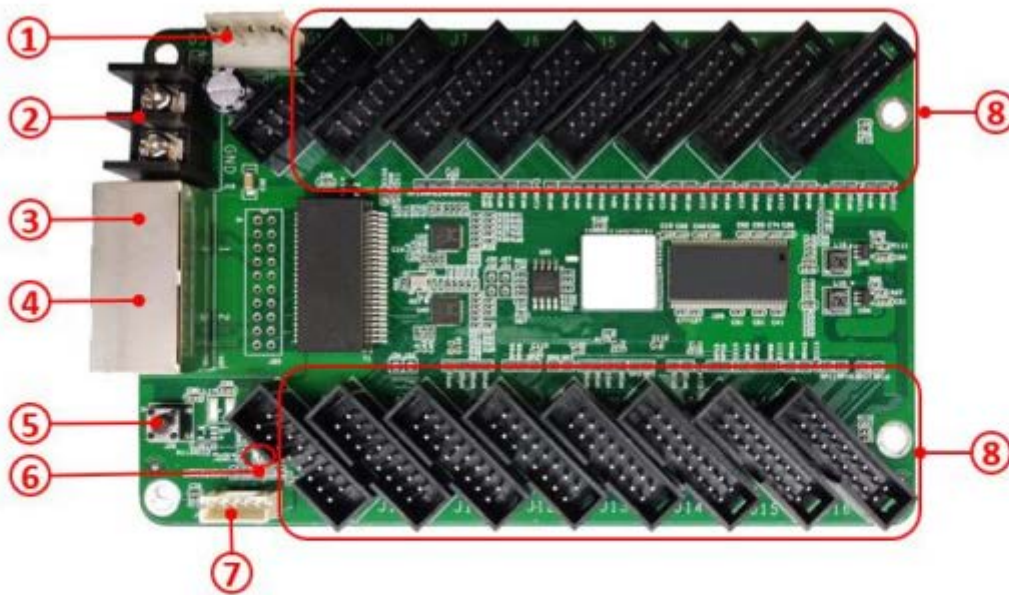


Adjustable color temperature

Improving picture expression by adjusting color temperature to match the LED characteristics



Hardware Interface



Interface

S/N	Name	Function	
1	Power 1	Connect to DC 3.8V~5.5V power supply for the receiving card, only use one of them.	
2	Power 2		
3	Network port A	RJ45, for transmitting data signals, dual network ports can enter and exit at will, and the system will automatically identify.	
4	Network port B		
5	Test button	The attached test procedures can achieve four kinds of monochrome display (red, green, blue and white), as well as horizontal, vertical and other display scan modes.	
6	Power indicator light D1	Red indicator light shows that the power supply is normal	
	Signal indicator D2	Flashes once per second	Receiving card: normal working, Ethernet cable connection: normal.
		Flashes 10 times per second	Receiving card: normal working, Cabinet: Highlight.
		Flashes 4 times per second	Receiving card: back up sender cards (Loop redundancy status).
7	External interface	For indicator light and test button.	
8	HUB pins	HUB75 interface J1~J16 are connected to the display modules. For details, see the interface definition.	

* The product photos in this article are for reference only, and only the actual purchase shall prevail.

SPECIFICATIONS

Model	MRC16 Series
Loading Capacity	256×1024
Data Interface	HUB75
Data Group	32
Color Depth	8bit
Dynamic Frame Rate	23.976~120Hz
Calibration Accuracy	8bit
Low Latency	√
Color Temperature Adjustment	√
Better Grayscale At Low Brightness	√
Automatic Highlight And OSD	√
Loop Backup	√
Irregular Design	√
Network Cable Detection	√