

Video Wall Controller Powerful Video And Image Processing Device

VKL Series

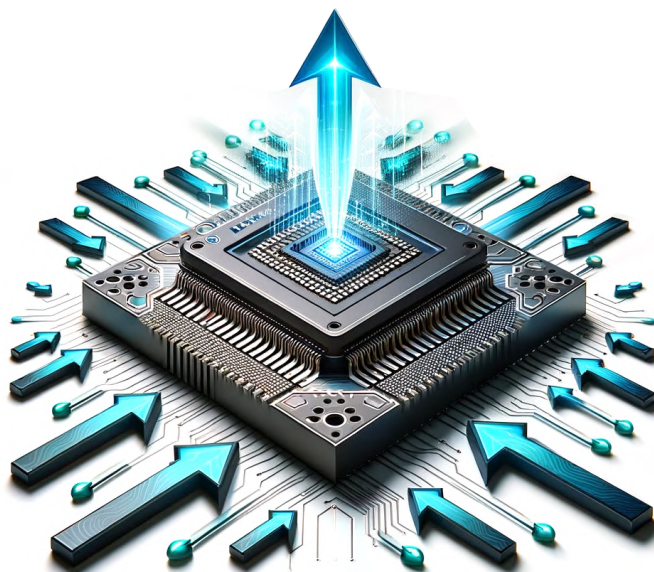


VKL Series



VKL Series

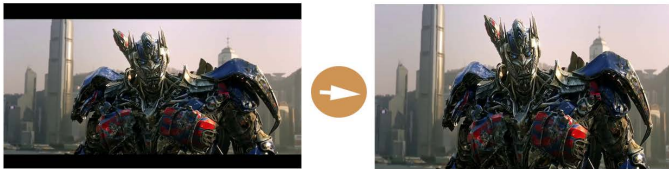
VKL video wall controller is new generation professional video image processing product which is based on the development of multi-windows, ultra-high definition and visual display control technology. Compare to other video wall controller in the market, VKL supports ultra-high single-channel bandwidth, reaching 6.5G,so that there is a significant advantage on the processing speed and professional display control. Adopt RS232+LAN interface control, and configure DVI and LAN and HDMI input/output boards,support up to 128 scene save and recall,to meet a variety of professional system application requirements.



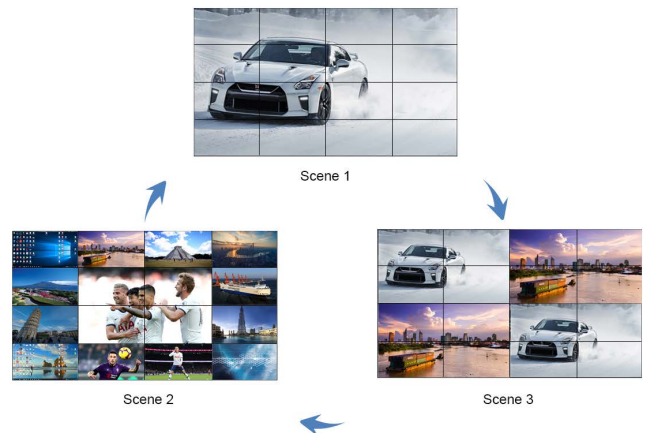
FEATURES

- Pure-hardware FPGA Array, modular design, parallel video processing hardware systems;
- Hot-swappable for I/O modules, control modules, easy to upgrade and maintenance;
- HDMI input and output; Supports 8-channel Gigabit network port output to LED screen,
- Opening 1/2 windows on each one screen;
- Up to 4 video wall groups control on single controller and work with variety of display terminals such as LCD, DLP, projector;
- Support RS232 to control other devices
- Multiple controlling device, can control by both web control and PC software, support roaming, overlay, zoom in/out, multi-window switching;
- Input source previewing and video wall content monitoring;
- Scene management, including save, switch, recall, recycle, Maximum support 128 scenes;
- Variety of control methods such as RS232, Network and compatible with third party control system;
- Support background image;
- Picture-in-picture, signal clip and a variety of display modes such as split screen, full screen and combination screen;
- EDID, customize the output resolution according to the physical resolution of the display system;
- Each input source can support 4 cutting methods
- Support audio matrix function, audio input and audio output

RELEVANT FUNCTION INDICATION



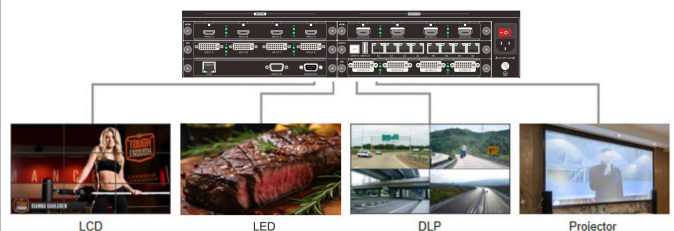
• Signal Clip



• Scene Switching



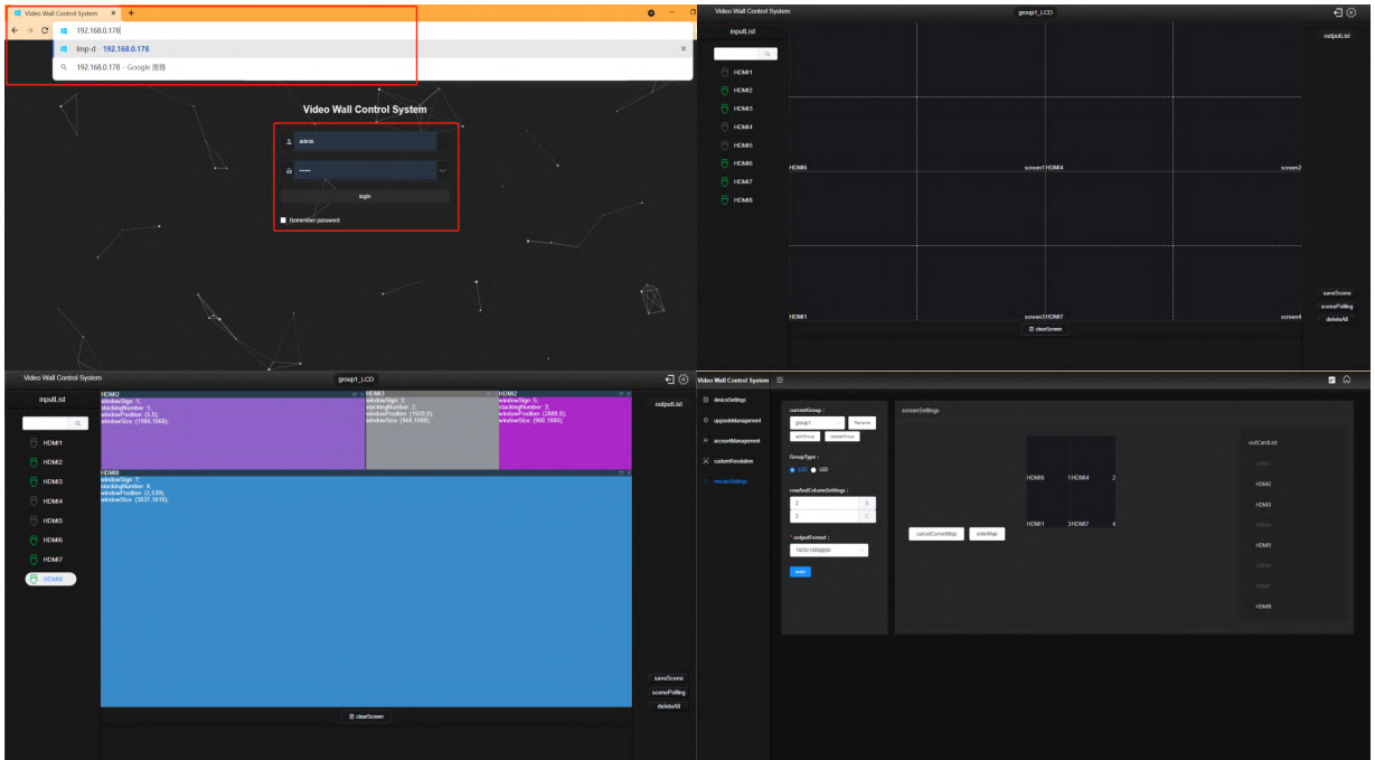
• Third-party Control



• Multi-group Control

WEB CONTROL

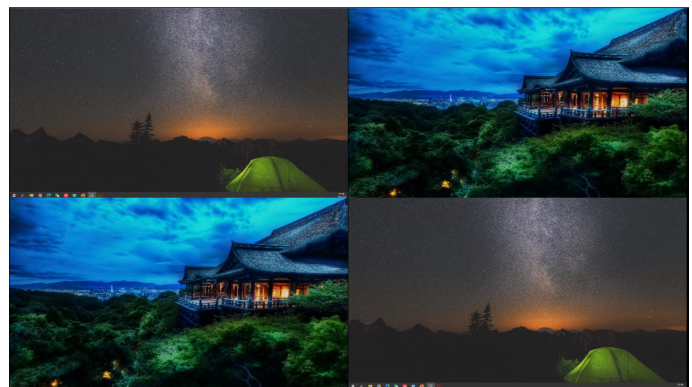
VKL comes with new feature of Web Control. The Web Control provides the properties, methods, and events that are common to PC software control. You can control the appearance and behavior of a Web Control by IP address and can control from multiple devices.



PREVIEW FUNCTION

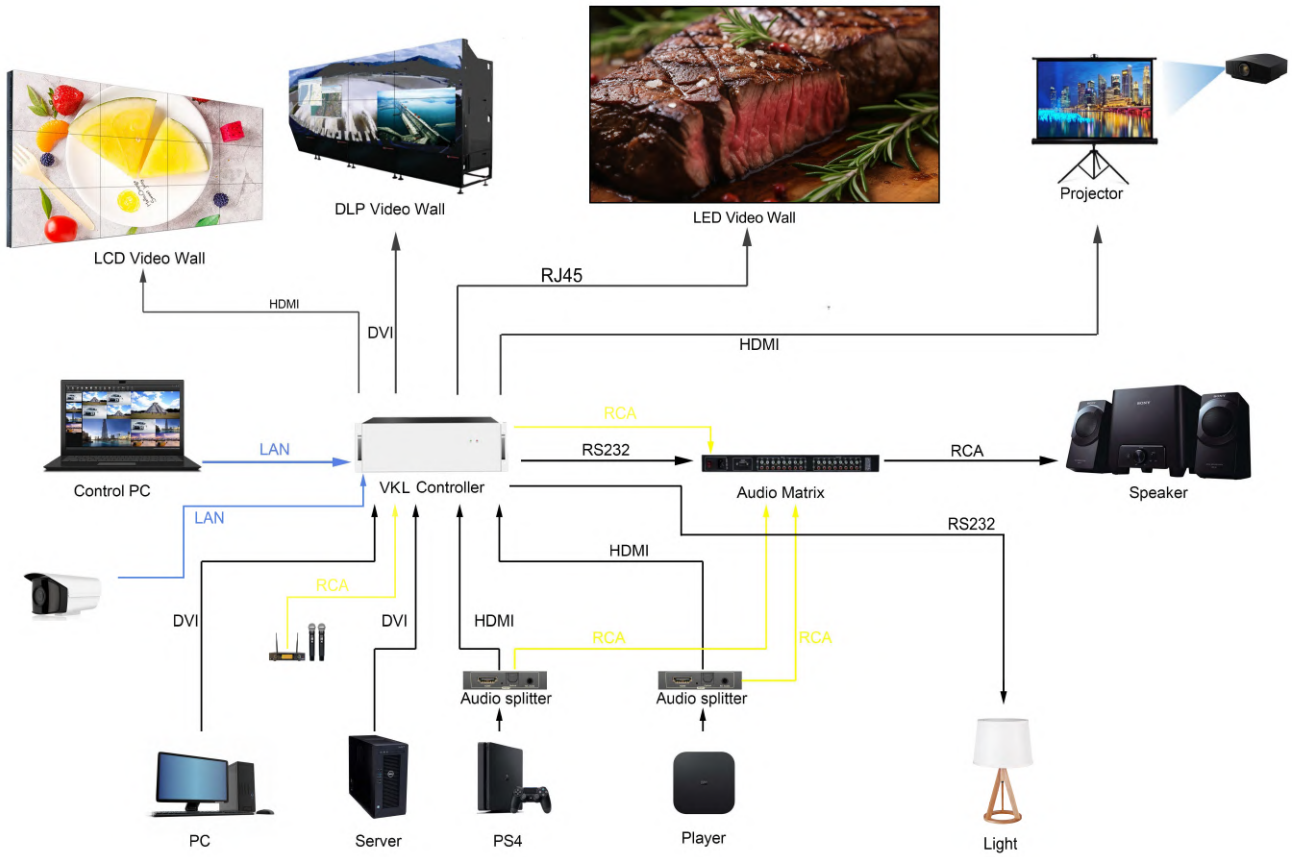


Control PC



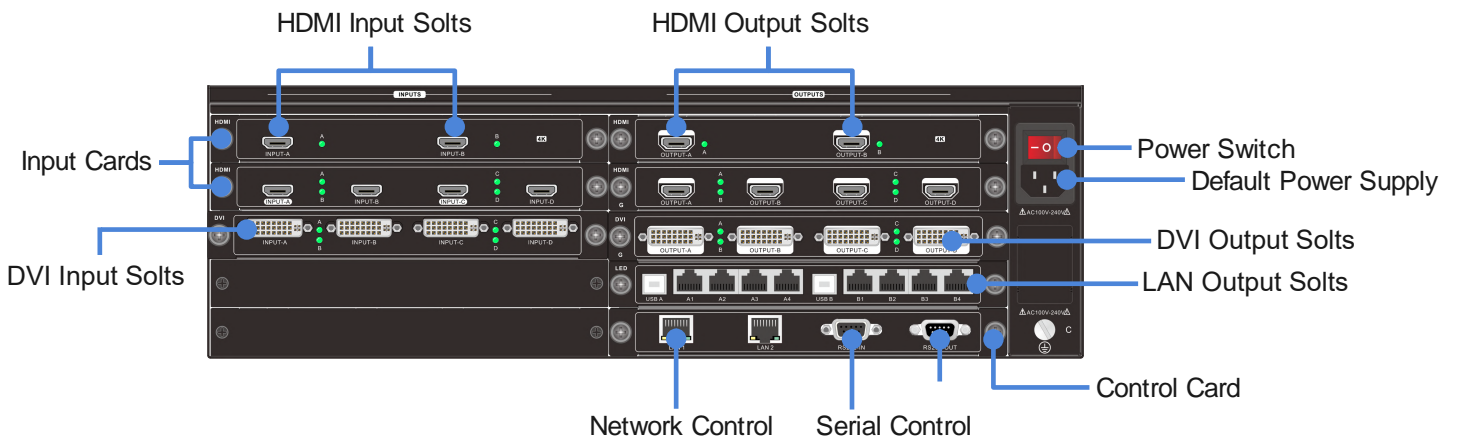
Videowall

DIAGRAM



Input: DVI, HDMI, 4KHDMI, DP, VGA, CVBS, SDI, Audio, Stream Output:
 DVI, HDMI, 4KHDMI, Audio, LAN, RS232
 Control: serial, network, third-party control system etc.

PRODUCT STRUCTURE



INPUTCARDS



Quad-Channel HDMI Input Card



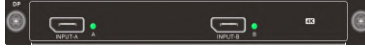
Quad-Channel DVI Input Card



Quad-Channel VGA Input Card



Dual-channel HDMI 4K Input card



Dual-channel DP 4K Input card



Single-Channel 4k@60 DP Input card



Quad-Channel SDI Input Card



Quad-Channel CVBS Input Card



Single-Channel IP Decoding Card



Quad-Channel HDMI+Audio Input Card



Quad-Channel DVI+Audio Input Card

OUTPUT CARDS



Quad-Channel HDMI Output Card



Dual-channel HDMI Output card



Dual-channel HDMI 4K Output card



Quad-Channel DVI Output Card



Dual-channel DVI Output card



Quad-channel Audio Output card

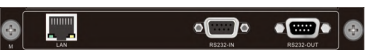


Eight-Channel RJ45 Output Card



Central Control card

CONTROL CARDS



Standard Control Card



iPRO Control Card

SPECIFICATIONS

Device size	2U		3U		6U		12U	
	Input	Output	Input	Output	Input	Output	Input	Output
2 Windows / Screen	8	12	20	16	36	36	76	76
4 Windows / Screen	4	6	10	8	18	18	38	38

Product Hardware Information	System Structure	Pure Hardware FPGA Architecture
	Start Up	<8s
	Operating System	No CPU And Operating System
Input/Output Signal	Board Type	Pure Hardware Pluggable,Hot-Swappable Structure
	Input Type	DVI,HDMI,4KHDMI, DP,VGA,CVBS,SDI, Audio
	Input Channel	1080P up to 76 channels
	Output Type	DVI,HDMI,4KHDMI, Audio,RJ45,RS232
Image Processing	Output Channel	1080P up to 76 channels
	Display Mode	Roaming, Overlay, Zoom In/Out, Multi-Windowing, Scene Switch, PIP, Full Screen And Combination Screen
	Scene/Signal Switching Time	Millisecond-Level Switching
	Multiple Group	Up to 04
	Max Input Resolution	3840x2160@60Hz
	Max Output Resolution	3840x2160@30Hz
	Single-Screen Window	2/4 Windows On One Screen
	Hot-Swappable	Support
	Control Structure	Software /Hardware
	Maximum Scenes	128
Control Function	Control Method	RS232/Network And Compatible With Third Party Control System
	Signal Preview	Support(Optional)
	Scrolling Text	Support(Optional)
	Power Supply Configuration	N+1 Redundant Power Supply Structure
Stability	Management Mode	C/S,WEB, iPad
	Safety	Hardware Structure, No Virus Interference
Functional(option)	Continuity	365 days, 7x24 hours operation
	iPRO Multi-Control	Support Browser & Pad Control, Signal Preview On PC Scrolling Text And Background Image
Working Environment	Operating Temperature	-15~60℃
	Storage Temperature	-30~75℃
	Operating Humidity	10 To 90% Without Condensation
	Storage Humidity	5~95% Without Condensation